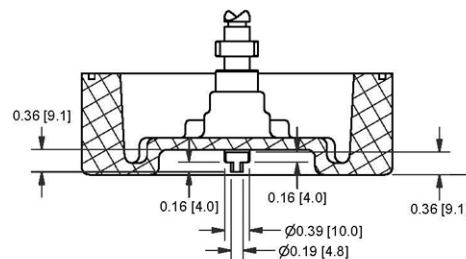
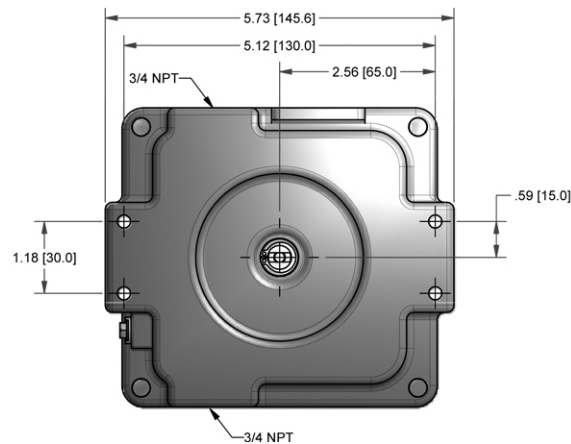
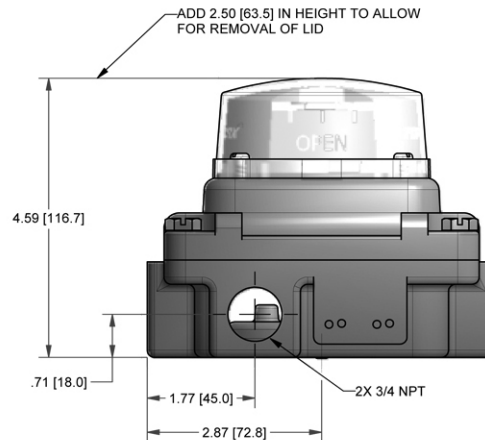
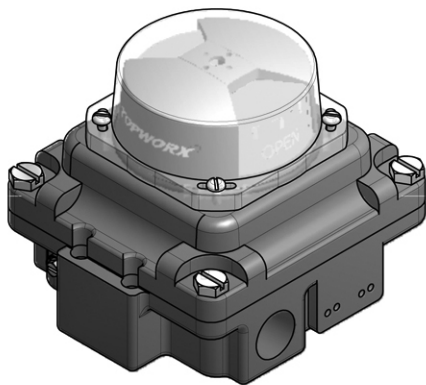


conversion

tD



MODEL NO.

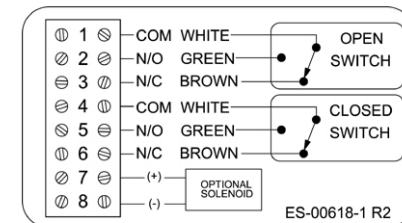
TXP-P2CGNPM

PRODUCT LINE

Valvetop Discrete Valve Controller

SPECIFICATIONS

Model	Valvetop Model TXP, epoxy-coated A360 Aluminum enclosure with dichromate coating
Bus Sensor	(2) SPDT (3A@120VAC/2A@24VDC)
Area Classification	Flame Proof ATEX/IECEX II2GD Ex d IIC; Ex A21, IP67
Visual Display	90° Green Open / Red Closed
Shaft	NAMUR, 304 Stainless Steel
Conduit Entries	(2) 1/2" NPT
O-Rings	Silicone
Operating Temps*	-50 °C to 80 °C



Current as of Jan 15, 2016 - subject to change without notice.

TOPWORX

TopWorx
3300 Fern Valley Rd.
Louisville, KY 40213

(502) 969-8000 ph.
(502) 969-5911 fax
www.topworx.com